

TQSOT



16"遙控座地扇 使用說明書 FD-40X77

為正確使用本產品，請在使用前仔細閱讀本說明書，
並請妥善保存以供今後參考。
說明書如有遺失，可通過下列途徑獲取：

- 1) 直接聯繫當地經銷商；
- 2) 售後熱線(852)2341 2381；
- 3) 發郵件到ask@masswinning.com索取電子版說明書。



173309901028

本說明書的圖示僅供參考，產品請以實物為準。

衷心感謝您購買本公司的產品，
希望您使用愉快！

目錄

安全規範

安全規範 2

產品說明

部件名稱 3

規格參數 4

產品使用

安裝方法 5

操作說明 8

維護保養

清潔保養 10

保用期資料 11

免責條款

免責條款 12

請嚴格按照本說明書要求正確使用本產品。

為避免造成人員傷害及財產損失，列出了以下安全規範，請務必執行。

不執行安全規範而錯誤使用時可能導致事故發生。

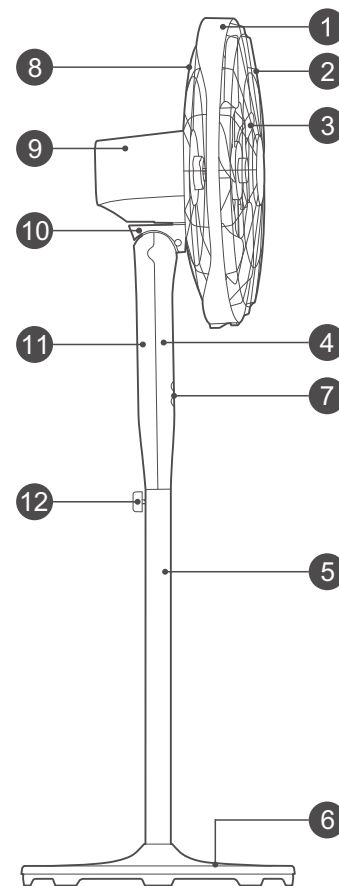
禁止事項

- 器具不打算由存在肢體、感官或精神能力缺陷或缺少使用經驗和知識的人(包括兒童)使用，除非有負責他們安全的人對他們進行與器具使用有關的監督或指導。應照看好兒童，確保他們不玩耍本器具。
- 請勿在靠近窗簾的位置使用；不要在網罩上懸掛外物，以免破壞風扇平衡及轉動機構。
- 請勿將風扇放置或安裝到斜面，避免傾倒或其它異常。
- 禁止在潮濕、高溫、多塵或儲存酸城處使用，避開火源或易燃物。
- 在安裝、移動過程中或不使用、維護保養時必須切斷電源並拔下電源插頭。
※不可用濕手插、拔電源插頭。

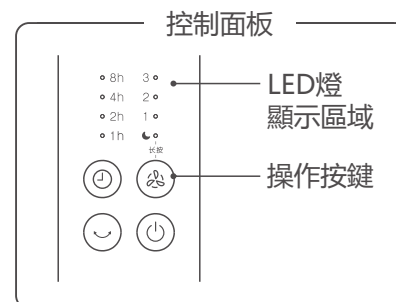
遵守事項

- 如果電源軟線損壞，為了避免危險，必須由製造商、其維修部或類似部門的專業人員更換。
- 風扇運轉期間，切勿把手指、尖物插入網罩內，以免造成人身傷害或破壞風扇。
- 本產品只適用於家庭使用。
- 嬰兒、老人、病人請勿長時間吹風。
- 安裝過程中請勿接通電源，移動、清潔、保養產品時請切斷電源。

部件名稱



- | | |
|-------|---------|
| 1.網罩圈 | 7.控制面板 |
| 2.前網 | 8.后網 |
| 3.風葉 | 9.罩殼 |
| 4.前殼 | 10.調節盒 |
| 5.下管 | 11.後殼 |
| 6.底盤 | 12.下管旋鈕 |



備註：圖示僅供參考，產品請以實物為準。

規格參數

型號	FD-40X77
額定電壓	220V~
額定頻率	50Hz
額定輸入功率	50W
噪音	≤62dB(A)

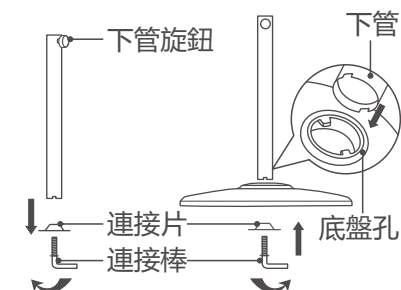
※具體參數請以產品為準。

安裝方法

注意：安裝風扇時，禁止將電源線插頭插在電源插座裏。

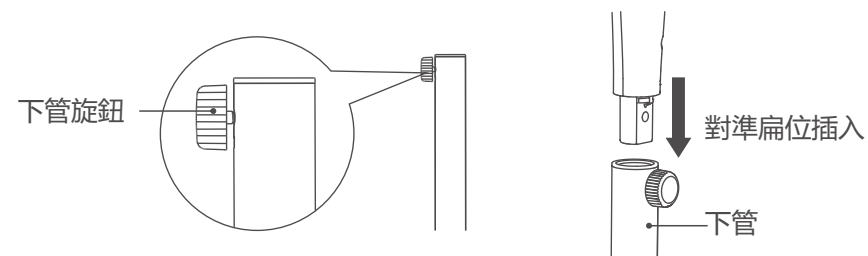
1 底盤安裝

- 旋轉連接棒，將連接棒、連接片取出。
- 將下管對準底盤孔形狀插入底盤孔內。
- 旋上連接棒和連接片，將底盤與下管緊固連接在一起。



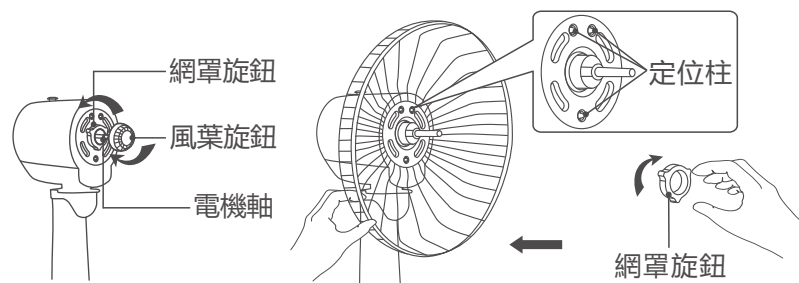
2 機身安裝

- 將下管旋鈕鬆開。
※在鬆開過程中螺母不得脫落。
- 將機身下部對準下管插入，裝配到位後順時針方向旋緊下管旋鈕，保證機身不會從下管拔出。



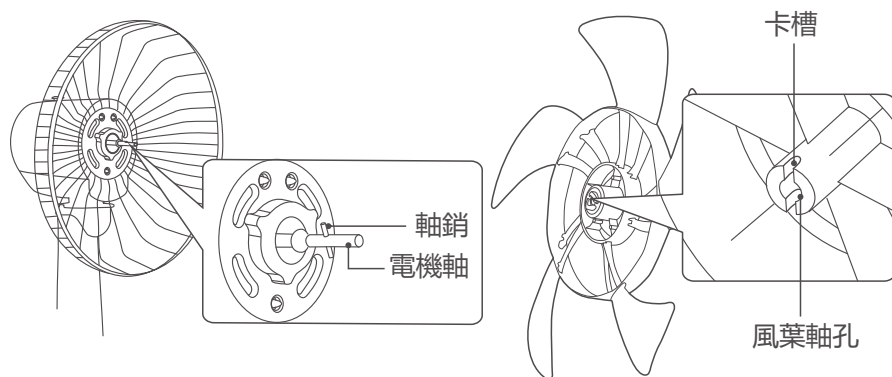
3 後網安裝

- 一只手固定電機軸，另一只手順時針旋出風葉旋鈕；然後逆時針旋出網罩旋鈕。
- 把後網上的孔對準電機罩蓋上定位柱，往後推，確保定位柱聳出孔。
- 一只手托住後網，另一只手將網罩旋鈕沿順時針方向旋入電機罩蓋上，使其將後網緊固在電機罩蓋上。

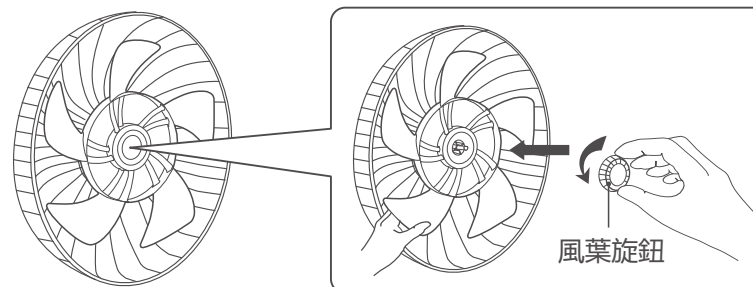


4 風葉安裝

- 將風葉軸孔形狀對準電機軸，對齊軸銷與卡槽並卡到位。

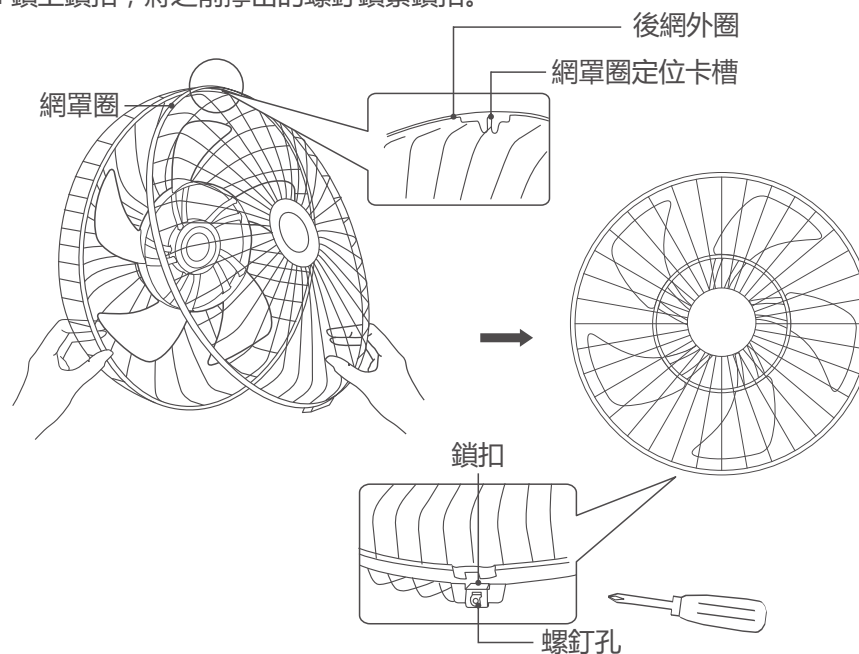


- 用手握住風葉，將風葉旋鈕沿逆時針方向旋入電機軸上，直至鎖緊。



5 前網安裝

- 先把網罩圈上的螺釘擰出放好，將前網與後網呈一定夾角，然後將網罩圈上端的定位卡槽掛於後網外圈上(注意：安裝時將前網擺正)，雙手同時用力將前網套於後網上。
- 鎖上鎖扣，將之前擰出的螺釘鎖緊鎖扣。



操作說明



- 接通電源後，按“⏻”鍵可在開機、待機狀態之間切換。

風速鍵

- 本產品具有3檔風速可調。
- 在開機狀態下，每短按“風速”鍵一次，風速在1-3檔之間迴圈切換；每長按“風速”鍵一次，送風模式在普通風-睡眠風之間切換。
- 在開機狀態下，短按遙控器“+”或“-”鍵，可調節風速，直至最大或最小檔。
- 普通風：落地扇以電機的基本檔位持續運行的工作狀態。
- 睡眠風 ：每小時自動降低一檔，直至最低檔。

定時/預約鍵

- 開機後，短按“定時/預約”鍵選擇定時關機時間(1h- 15h，長按可快速調節)，到15h後則短按取消定時。
- 待機狀態下，短按“定時/預約”鍵選擇預約開機時間(1h- 15h，長按可快速調節)，到15h後則短按取消預約。

搖頭鍵

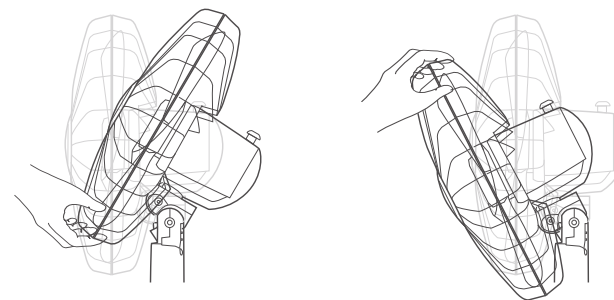
- 開啟或停止搖頭功能。

其他功能

- 熄屏功能40秒無操作，所有指示燈熄滅，按任意按鍵(除“⏻”鍵外)可以重新點亮指示燈。
- 記憶功能
本產品具有記憶功能，在待機未斷電情況下，記憶當前工作狀態，再次開機時以記憶工作狀態運行。
- 自動待機任何工作狀態連續15小時無任何操作(包括面板按鍵和遙控器)，風扇會自動待機。

俯仰送風

- 要使風扇向上或向下俯仰送風，請輕抬或輕按網罩。



遙控器

- 本產品具有紅外遙控功能，遙控器按鍵操作參考整機操作。

備註：此款遙控器為通用型遙控器，可同時適用於多種類型(功能)的電風扇，部分按鍵功能不適用於本機型。

清潔保養

為防止對器具的傷害，清洗前請先拔下電源插頭，在產品完全冷卻後才能開始清潔和保養。應使用軟布和中性洗滌劑擰幹後擦拭風扇。請勿使用任何會損壞產品表面的研磨工具和溶劑。再次使用前須保證產品乾燥並安裝到位。

1. 請勿使用硬物或用力擦拭，以免刮花風扇表面。
2. 保養時，請用軟布浸溫水或廚房專用洗滌劑後擰幹擦拭風扇，然後用軟的幹布擦淨。
3. 清洗前請先拔下電源插頭，在產品完全冷卻後才能開始清洗和保養。所有零部件的清潔，請勿使用香蕉水、汽油、去污粉、硬質刷等。清洗完畢後，再次使用前請檢查可拆卸部件是否安裝到位。
4. 如產品配有遙控器或適配器，請妥善保管，不要摔跌。

保用期資料

1. 由購買日期計正常使用下提供兩年保用。
2. 保用不包括下列各項：
 - A. 產品錯誤使用、被更改、天災、因運輸拆卸不當、錯誤測試、不合格維修及錯誤使用。
 - B. 更換、修理、及翻新外殼、機身或不影響產品功能。
 - C. 產品的包裝、運輸費及出入口關稅或任何相關費用。
3. **請妥善保存產品購買發票/單據。必須出示產品購買發票/單據方可獲兩年保養服務。**
4. 請自行攜同本產品及有關購買單據前往下列地址維修：

地址： 香港火炭坳背灣街37-39號峰達工業大廈602室

服務熱線 Service Hotline： (852) 2341 2381

電郵查詢 Email enquiry： ask@masswinning.com

服務時間：星期一至五: 10:00-13:00, 14:00-17:00; 星期六、星期日及公眾假期: 休息
5. 為避免電路負荷過重，造成火警危險，每一個供電插座上只可插上一個萬能蘇或一個拖板。(避免在同一插座上有其他電器的插頭插置。) 拖板上不應插上任何萬能蘇，而在萬能蘇上亦不應插上任何拖板。
6. 如發現萬能蘇或拖板或插座的插孔有鬆動現象，不能穩固插頭，或發現插腳難以插入插孔，則不應使用。
7. 避免使用萬能插座及延長電源線；如使用切勿與其他電器共用同一插座，以免導致本產品機件損壞。
8. 此產品只作一般家庭用途。
9. 保養服務只於香港和澳門指定商戶銷售的原裝格力小家電行貨。

環境保護

本產品使用壽命結束時請勿與一般家庭廢棄物一併丟棄。請將該產品放置於政府指定的回收站。此舉能為環保盡一份心力。



重要資訊

儘管本公司或其他生產商受知會，在任何情況下本公司或其生產商將不須就任何聲明、承諾及保證的索償而負責及不會向客戶或協力廠商承擔任何因使用或未能使用此產品所帶來直接的、非直接的、非專業的、特殊的、偶然的、間接的、有代表性的或其他任何損傷的責任(包括但不限於身體的損傷、財產的損失、公司盈利的損失、公司運作受中斷)。在任何情況下本公司或其生產商所承擔之責任將不會超過此產品之購買金額。

產品如有任何技術規格更改不作另行通知。

免责条款

下列原因造成的人身、财产等损失，制造商概不负责：

1. 没有正确使用产品或因疏忽或误用造成产品损坏；
2. 没有遵守制造商的书面说明，更改、改造、维修或与其他设备一起使用产品；
3. 经核实，产品缺陷是直接由腐蚀性气体造成的；
4. 经核实，产品在运输过程中因操作不当出现缺陷；
5. 未按使用说明书或相关规定进行操作、维护、保养造成机组损坏的；
6. 经核实，问题或争议是由非制造商的零配件的质量、规格或性能发生的或造成的；
7. 因不可抗拒的自然灾害或使用环境恶劣造成损坏的。



TQSOT



16" REMOTE CONTROL STAND FAN

Owner's Manual

Original Instructions

FD-40X77

Thank you for choosing our product. Please read this Owner's Manual carefully before operation and retain it for future reference.

If you have lost the Owner's Manual, please contact the local agent or call (852)2341 2381 or send email to ask@masswinning.com for electronic version.

本說明書的圖示僅供參考，產品請以實物為準。

Thank you for choosing our product.
Wish you have a good operation.

Content

Safety Regulation

Safety Regulation 2

Product Instruction

Parts' Name 4

Main Technical Parameters 5

Product Operation

Installation Method 6

Operation Instruction 9

Maintenance

Clean and Maintenance 11

Warranty 12

Exception Clauses

Exception Clauses 13

Please follow this instruction manual strictly for correct operation. In order to prevent personal injury and property loss, please follow those safety regulations as below.

If you don't follow these safety regulations, wrong operation may cause accident.

Prohibition

1. This appliance can be used by children aged from 8 years and above and persons with reduced physical, sensory or mental capabilities or lack of experience and knowledge if they have been given supervision or instruction concerning use of the appliance in a safe way and understand the hazards involved. Children shall not play with the appliance. Cleaning and user maintenance shall not be made by children without supervision.

 2. Do not operate the unit close to the curtain. Do not hang foreign objects on the grille to prevent damaging the balance of the fan or rotational structure.

 3. Do not put or install the fan on the oblique plane to prevent inclination or other abnormal phenomenon.

 4. Prohibit operating the fan under humid, high-temperature, dusty environment or the place where acid or alkali is stored. Do not operate the unit close to fire source or inflammable objects.

 5. When the unit is not operated during maintenance period, please cut off the power and then unplug the power plug.
- ※ Do not pull the power plug with wet hand.

Follow

1. If the supply cord is damaged, it must be replaced by the manufacturer, its service agent or similarly qualified persons in order to avoid a hazard.

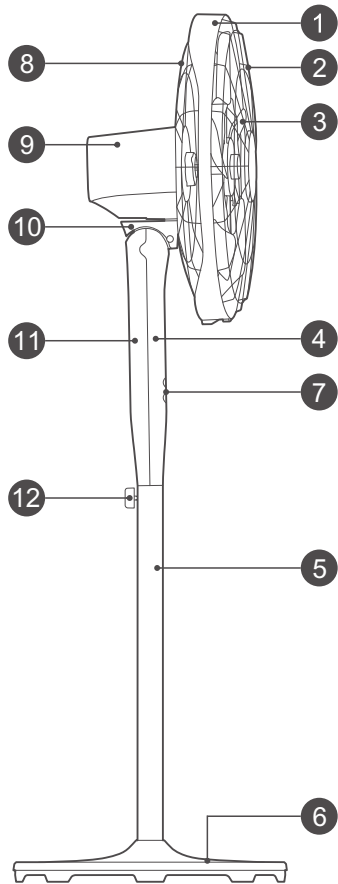
2. During the operation process, do not insert your fingers or sharp objects into grille to prevent personal injury or damage to the fan.

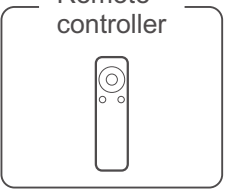
3. This product is only for household use.

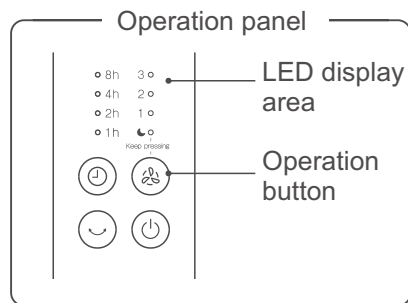
4. The infant, the elder and the patient should not blow the wind for a long time.

5. Do not connect the power during installation. When moving, cleaning and maintaining the product, please cut off the power.

Parts' Name



- Remote controller
- 
- | | |
|----------------|--------------------|
| 1.Grille ring | 7.Control panel |
| 2.Front grille | 8.Rear grille |
| 3.Blade | 9.Case |
| 4.Front case | 10.Adjustment box |
| 5.Lower tube | 11.Rear case |
| 6.Chassis | 12.Lower tube knob |



Note: the diagram is only for reference. Please refer to the actual product.

Main Technical Parameters

Model	FD-40X77
Rated Voltage	220V~
Rated Frequency	50Hz
Rated Power Input	50W
Noise	≤62dB(A)

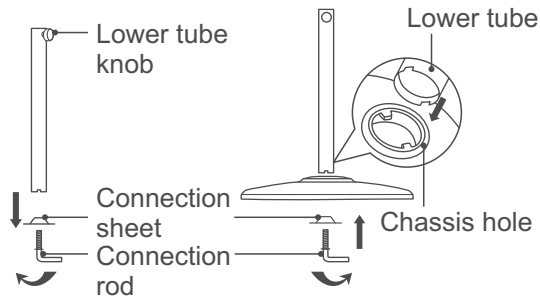
※Note: Please refer to the product for the detailed parameters.

Installation Method

Caution: During installation, prohibit inserting the power plug into the power socket.

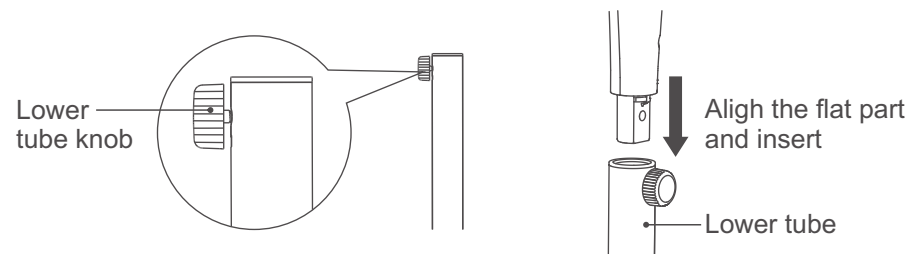
1 Installation of chassis

- Rotate the connection rod. Take out the connection rod and connection sheet.
- Align the lower tube with the chassis hole and insert it to the chassis hole.
- Rotate the connection rod and connection sheet, then fix the chassis with the lower tube.



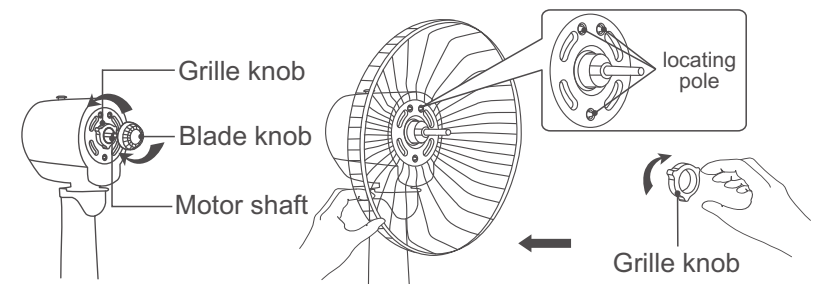
2 Installation of body

- Unscrew the lower tube knob.
- ※The nut shall not fall off in the unscrewing process.
- Align the bottom body with the lower tube, after assembly, rotate the lower tube knob in clockwise and ensure the unit will be pulled out from the lower tube.



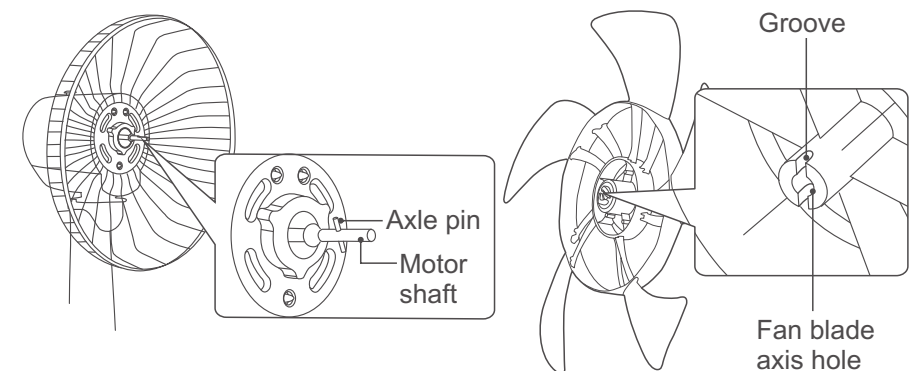
3 Installation of rear grille

- Fix the motor shaft with one hand, and rotate out the blade knob in clockwise direction with the other hand; After that, rotate the grille knob in an anti-clockwise direction.
- Aim the hole on the rear grille at the locating pole of the motor cover, push it backwards to make sure the locating pole comes out of the hole.
- Hold the rear grille with one hand, and rotate the grille knob into the motor cover in clockwise direction with the other hand to make rear grille to be fixed on the motor cover.

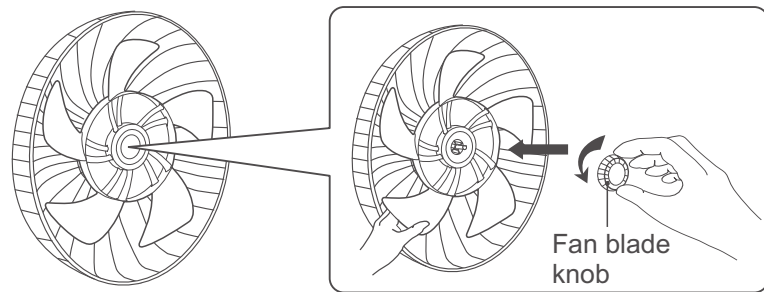


4 Installation of blade

- Align the fan blade axis hole with the motor shaft and align the axle pin with the groove.

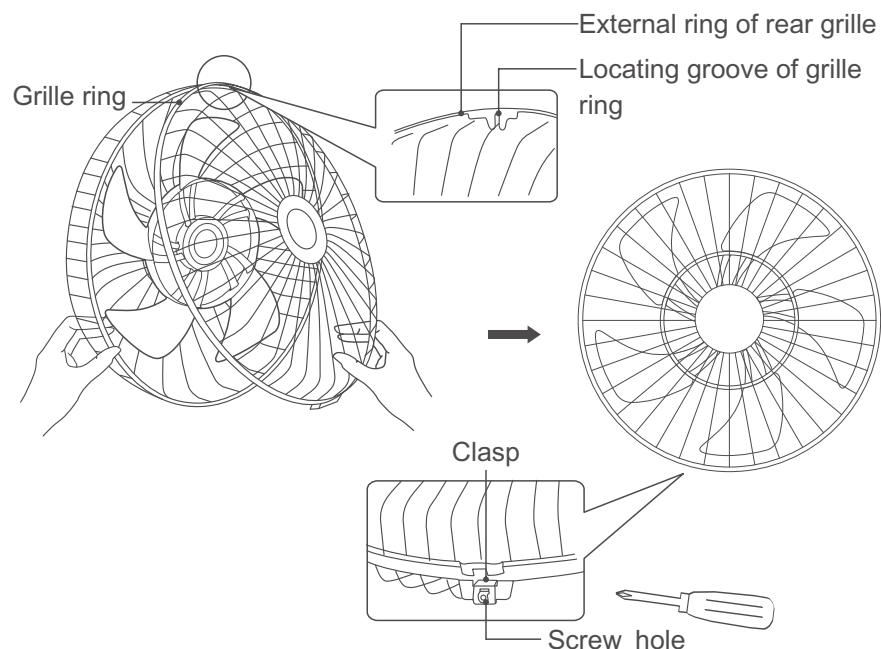


- Hold the blade with hand, and then rotate the blade knob into the motor shaft in an anti-clockwise direction until it's tightened.



5 Installation of front grille

- Twist the screws on the grille ring, leave certain angle for the front grille and rear grille, then hang the locating groove on top of grille ring on the external of rear grille (note: put the front grille right for installation), cover the front grille to the rear grille with both hands.
- Lock the clasp and tighten the screws unscrewed previously.



Operation Instruction



- After connecting to power, press "⏻" button to switch the startup and shutdown status.

Fan speed 🌀

- It has 3 speeds for adjustment.
- Under ON status, for every short press of "Speed", the fan speed will be switched among 1-3 circularly; for every long press of "Speed", the air supply mode will be switched between Normal to Sleep.
- Under ON status, short press "+" or "-" button of remote controller to adjust the speed, until it reaches the maximum or minimum gear.
- Normal: the continuous working status of stand fan in the basic gear of motor.
- Sleep 🌙 : the fan speed will decrease one gear for every hour until it reaches the minimum.

Timer/Preset ⌚

- After turning on the unit, short press the "Timer/Preset" button to select time for timer OFF (1h-15h, long press for fast adjustment), then short press Cancel timer after 15 hours.
- Under standby status, short press "Timer/Preset" button to select time for timer ON (1h-15h, long press for fast adjustment), then short press Cancel preset after 15 hours.)

Oscillation 😊

- Start or stop oscillation.

Other functions

- Screen OFF

All indicators will be off if no operation in 40 consecutive seconds, press either button (except "⏻" button) to re-activate the the indicator.

- **Memory function**

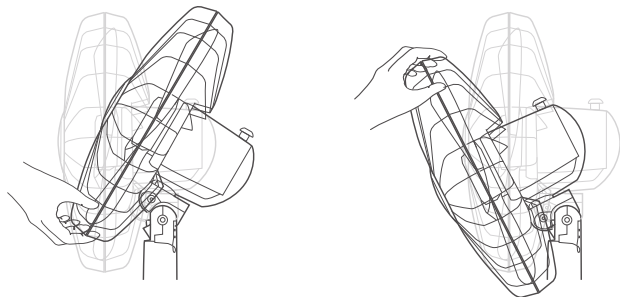
It has memory function. Under standby but energized status, the current operation status will be memorized. The unit will operate in the memorized status after startup again.

- **Auto standby**

If no operation in 15 consecutive hours under any working status (including panel button and remote controller), the fan will be standby automatically.

- **Up&down air supply**

- To realize upward and downward air supply, please lift or press the grille slightly.



- **Remote controller**

- It has the infrared remote control function. Please refer to the operation manual for the operation of remote controller.

Remark: The remote controller is the general type, suitable for the electric fan of different models (functions), but some button functions are not applicable for this model.

Maintenance and Protection

To prevent the damages to the appliance, please remove the power plug before cleaning. Clean and maintenance shall be conducted after the product is completely cool. Please use twisted soft cloth with neutral detergent to wipe the fan. Don't use any grinding tool and solvent which will damage the surface of the product. Before using the product again, please ensure it is dry and properly installed.

1. Do not use hard object to wipe the fan or wipe the fan forcibly to prevent scratch.
2. During maintenance, please dip the soft cloth into warm water or special abluent for kitchen, twist off the cloth to wipe the fan, and then use a soft dry cloth the wipe it.
3. Before cleaning, remove the power plug first. Do not start cleaning and maintenance until the product is completely cooled down. Do not use thinner, alcohol, cleaning powder or hard brush to clean the components. After cleaning, please check whether all parts are installed in place before operation.
4. If the product is supplied with remote controller or power adapter, please keep them well and don't drop them.

Warranty

1. The product has 2 year warranty from the date of purchase.
2. The warranty shall not apply:
 - A. To any Product subjected to accident, misuse, neglect, alteration, Acts of- God, improper handling, improper transport, improper use, improper testing or unauthorized repair;
 - B. To cosmetic problems or defects which result from normal wear and tear under ordinary use, and do not affect the performance or use of the product. All warranties are void if the product is opened, altered, and/or damaged;
 - C. To any packing, transportation, export / import tax or any related expenses.
3. **CUSTOMER MUST PRESENT THE SALES INVOICE OR RECEIPT FOR 2 YEAR WARRANTY SERVICES.**
4. Please bring along the product and sales invoice or receipt to our services center for warranty services during office hour as below:

Address: Unit 602, Fonda Industrial Building, 37-39, Au Pui Wan Street, Fo Tan, Shatin, New Territories, Hong Kong

Service Hotline: (852) 2341 2381

Email enquiry : ask@masswinning.com

Service Hours : 10:00-13:00, 14:00-17:00; Mon – Fri;
Sat, Sun & Public Holiday: Closed
5. To prevent circuit overload and fire, no more than one adaptor or one extension unit should be inserted into a socket outlet. (Do not connect other appliances to the socket outlet supplying an electric heater.) No adaptor should be inserted into any extension unit or vice versa.
6. Stop using an adaptor or extension unit or socket if its socket holes cannot firmly hold a plug or if it is too hard to insert a plug into it.
7. Please make sure the plug is fully plugged-in before use. Do not use any adapter or extension cord; Never use the same supply socket for this appliance and other appliances at the same time, in order to avoid damage to this appliance.
8. **THE APPLIANCE IS FOR HOUSEHOLD USE ONLY.**
9. This warranty is valid only for original GREE small home appliances sold by authorized dealers in Hong Kong and Macau.

ENVIRONMENT

Do not throw away the appliance with the normal household waste at the end of its life, but hand it in at an official collection point for recycling. By doing this, you help preserving the environment.



IMPORTANT NOTICES

IN NO EVENT SHALL OUR COMPANY OR THE SUPPLIER BE LIABLE TO YOU OR ANY OTHER PARTY FOR ANY DIRECT, INDIRECT, GENERAL SPECIAL, INCIDENTAL, CONSEQUENTIAL, EXEMPLARY OR OTHER DAMAGES ARISING OUT OF THE USE OR INABILITY TO USE THE PRODUCT (INCLUDING, WITHOUT LIMITATION, DAMAGES FOR INJURY, LOSS OF PROPERTY, BUSINESS PROFITS, BUSINESS INTERRUPTION) OR FROM ANY BREACH OF WARRANTY, EVEN IF OUR COMPANY OR SUPPLIER HAS BEEN ADVISED OF THE POSSIBILITY OF SUCH DAMAGES. IN NO CASE SHALL OUR COMPANY OR SUPPLIER'S LIABILITY EXCEED THE AMOUNT YOU PAID FOR THE PRODUCT.

Specifications, designs and dimensions are subject to change without prior notice.

Exception Clauses

Manufacturer will bear no responsibilities when personal injury or property loss is caused by the following reasons:

1. Damage the product due to improper use or misuse of the product;
2. Alter, change, maintain or use the product with other equipment without abiding by the instruction manual of manufacturer;
3. After verification, the defect of product is directly caused by corrosive gas;
4. After verification, defects are due to improper operation during transportation of product;
5. Operate, repair, maintain the unit without abiding by instruction manual or related regulations;
6. After verification, the problem or dispute is caused by the quality specification or performance of parts and components that produced by other manufacturers;
7. The damage is caused by natural calamities, bad using environment or force majeure.